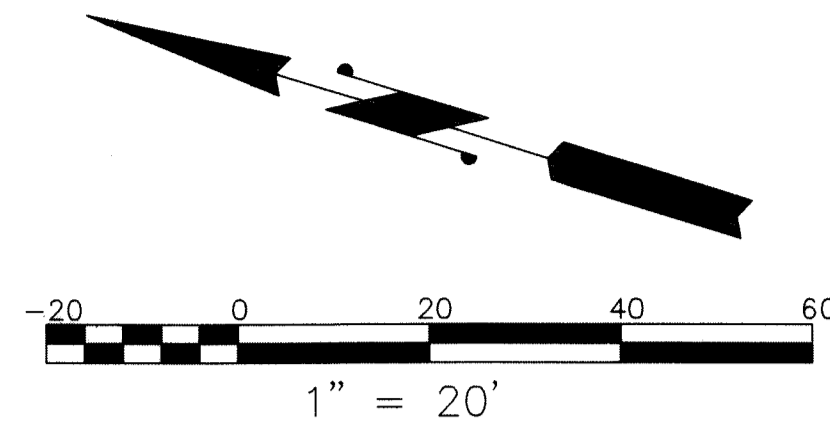


MASTROIANNI FAMILY OFFICE

15

BEING A REPLAT OF PELICAN SQUARE
 AS RECORDED IN PLAT BOOK 130, PAGES 1 AND 2
 PUBLIC RECORDS OF PALM BEACH COUNTY, FLORIDA
 LYING IN SECTION 30, TOWNSHIP 40 SOUTH, RANGE 43 EAST
 VILLAGE OF TEQUESTA, PALM BEACH COUNTY, FLORIDA

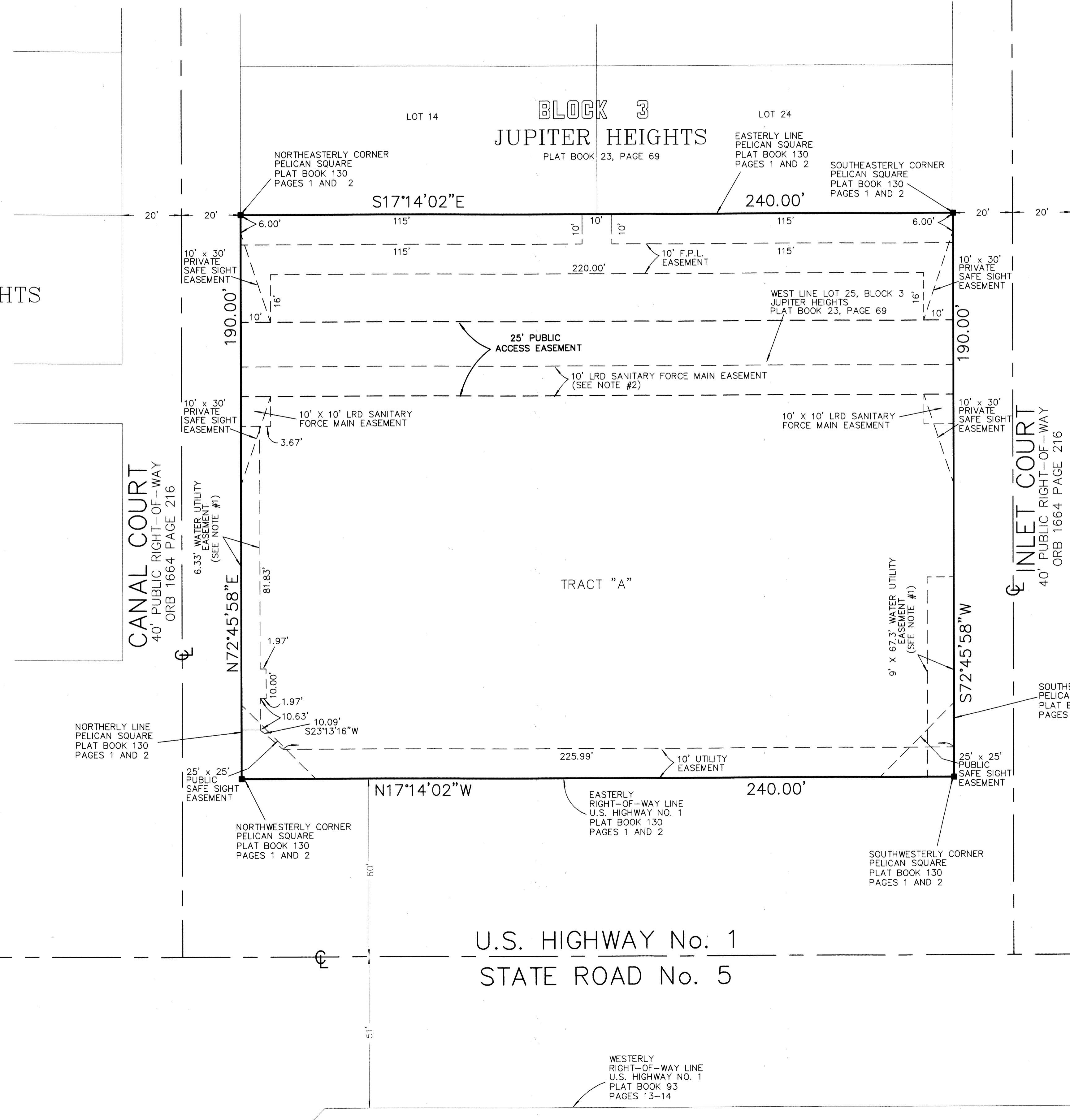


PAGE 2 OF 2

BLOCK 2
JUPITER HEIGHTS
 PLAT BOOK 23, PAGE 69

BLOCK 3
JUPITER HEIGHTS
 PLAT BOOK 23, PAGE 69

BLOCK 4
JUPITER HEIGHTS
 PLAT BOOK 23, PAGE 69



***NOTE #1**
 IN THE EVENT OF CONSTRUCTION, MAINTENANCE OR OPERATION ACTIVITIES PERFORMED BY THE VILLAGE OF TEQUESTA IN THE WATER UTILITY EASEMENT, ANY AND ALL COSTS FOR REPAIR AND/OR REPLACEMENT OF SURFACE COVERING (PAVEMENT, PAVER, ETC.) SHALL BE THE SOLE FINANCIAL RESPONSIBILITY OF THE MASTROIANNI FAMILY OFFICE OWNERS WITH MASTROIANNI FAMILY HEADQUARTERS, LLC, ITS SUCCESSORS AND ASSIGNS.

***NOTE #2**
 IN THE EVENT OF CONSTRUCTION, MAINTENANCE OR OPERATION ACTIVITIES PERFORMED BY THE LOXAHATCHEE RIVER ENVIRONMENTAL CONTROL DISTRICT AND/ OR THE VILLAGE OF TEQUESTA IN THE LRD SANITARY FORCE MAIN EASEMENT, ANY AND ALL COSTS FOR REPAIR AND/OR REPLACEMENT OF SURFACE COVERING (PAVEMENT, PAVER, ETC.) SHALL BE THE SOLE FINANCIAL RESPONSIBILITY OF THE MASTROIANNI FAMILY OFFICE OWNERS WITH MASTROIANNI FAMILY HEADQUARTERS, LLC, ITS SUCCESSORS AND ASSIGNS.

LEGEND:
 ☉ = CENTERLINE
 ■ = EXISTING
 4" x 4" CONCRETE MONUMENT & DISC "P.R.M. L.B.7622"
 P.R.M. = PERMANENT REFERENCE MONUMENT
 O.R.B. = OFFICIAL RECORDS BOOK
 F.P.L. = FLORIDA POWER & LIGHT
 LRD = LOXAHATCHEE RIVER DISTRICT

U.S. HIGHWAY No. 1
 STATE ROAD No. 5